



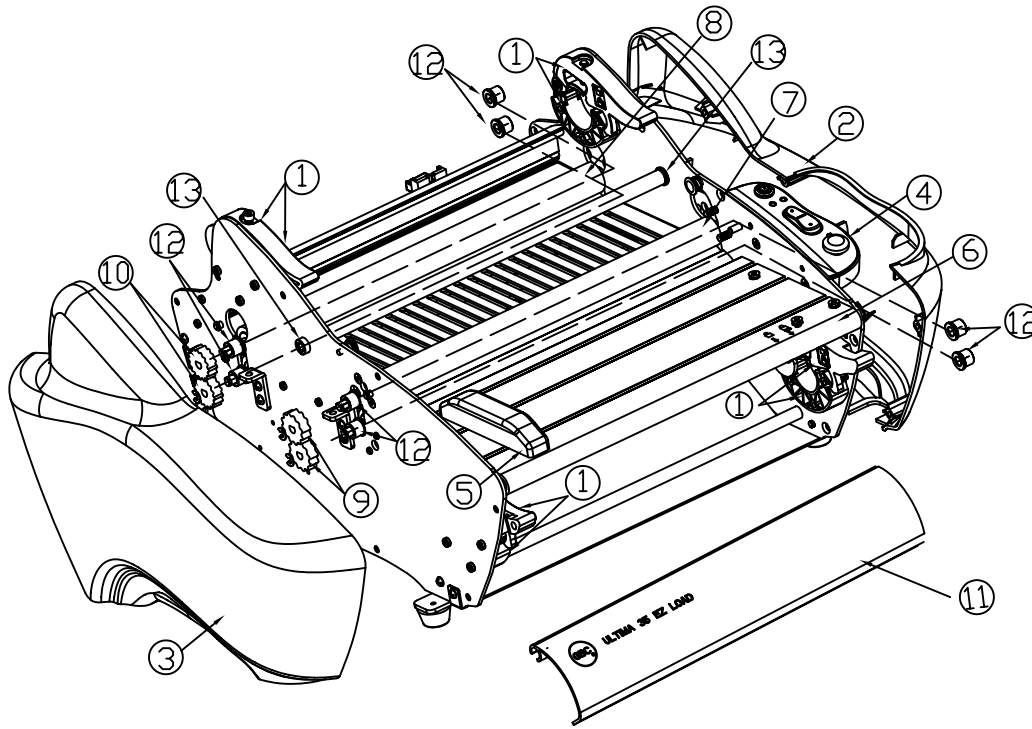
ULTIMA 35 EZ-LOAD Parts List



GBC IS AN ACCO BRANDS COMPANY

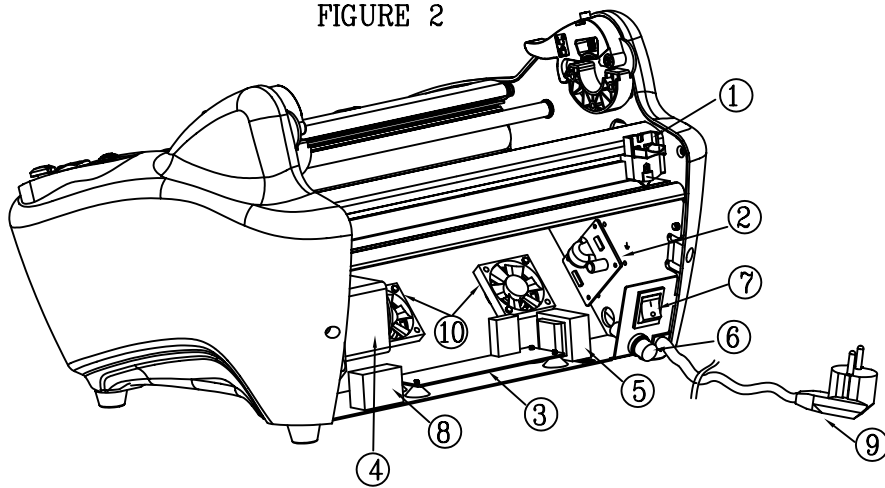


FIGURE 1



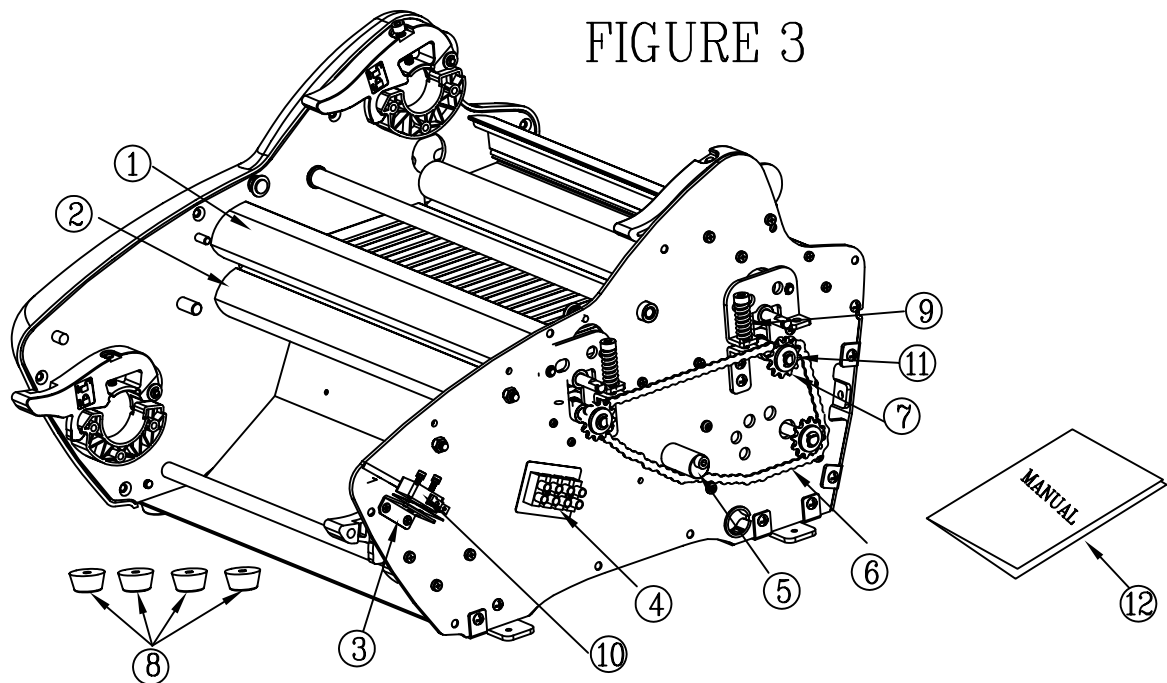
Item no	Part NO.	Description	QTY
①	910400010970	EZ LOAD FILM ASS'Y	1
②	910400010930	RIGHT SIDE COVER ASS'Y	1
③	910400010940	LEFT SIDE COVER ASS'Y	1
④	910400010980	CONTROL PANEL ASS'Y	1
⑤	910400010950	GUIDE PAPER ASS'Y	1
⑥	910400010990	FEED TABLE ASS'Y	1
⑦	180200008140	FRONT ROLLERS (GRAY)	2
⑧	180200008130	REAR ROLLERS (BLUE)	2
⑨	130503900100	FORNT ROLLER GEAR	2
⑩	130506100100	REAR ROLLER GEAR	2
⑪	180000553180	HEATSHOE COVER PLASTIC WITH PRINTING	1
⑫	130207400100	ROLLER BUSHING	8
⑬	130207400100	IDLE BAR BUSHING	2

FIGURE 2



Item no	Part NO.	Description	QTY
①	910400010960	CUTTER HOUSING ASS'Y	1
②	910400011020	EZ35 US EMC PCB ASS'Y	1
②	910400011030	EZ35 EU EMC PCB ASS'Y	1
③	910400011040	EZ35 BODY MAIN PCB ASS'Y	1
④	660000002520	MOTOR 230V 50HZ	1
④	660000002300	MOTOR 120V 60HZ	1
⑤	622000019700	TRANSFORMER 9V 120V 6PIN(US)	1
⑤	622000020500	TRANSFORMER 9V 230V 6PIN(EU)	1
⑥	91000012840A	EZ35 FUSE HOLDER AND WIRE (US)	1
⑥	910000131600	EZ35 FUSE HOLDER AND WIRE (EU)	1
⑦	671100008800	EZ35 POWER SWITCH	1
⑧	564255212010	CAPACITOR PLS DIP 2.5UF 250V+-5% 0 TC-P0 US	1
⑧	564105219010	Capacitor PLS DIP 2.5UF 450V+-5% 0 TC-P0 (EU)	1
⑨	640100085700	CABLE POWER 3 PIN US EZ35	1
⑨	640100086500	EU CABLE POWER 3 PIN	1
⑨	640100088100	UK CABLE POWER 3 PIN	1
⑨	640100088600	SWISS CABLE POWER 3 PIN	1
⑩	91000096170	EZ35 ROLLER TWO FAN	2

FIGURE 3



Item no	Part NO.	Description	QTY
①	910400011000	HEAT SHOE TOP ASS'Y	1
②	910400011010	HEAT SHOE BOTTOM ASS'Y	1
③	13050220010A	INTERLOCK SWITCH SECC	1
④	710100018000	4 PIN TERMINAL BLOCK	1
⑤	100921700100	CHINA TAKE UP POM 94V0 90300	1
⑥	180600003700	CHAIN	1
⑦	130503800100	SPROCKET 12T S45C	3
⑧	180200008180	RUBBER FOOT SILICONE	4
⑨	130504300100	ROLLER TENSION	4
⑩	670300011600	SAFETY SWITCH MICRO VMS15-89N-15-V15PUSH DICGU	1
⑪	130036200100	GEAR*4 E-RING	4
⑪	130036200100	CHAIN*4 E-RING	3
⑪	130036200100	TENSION PLATE*4 E-RING	4
⑫	305001163210	MANUAL GBC (US)	1
⑫	305001163240	MANUAL GBC (EU)	1